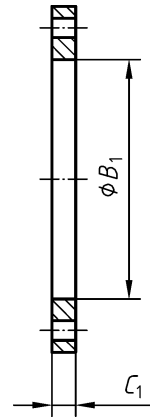
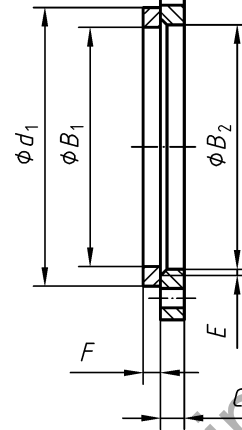


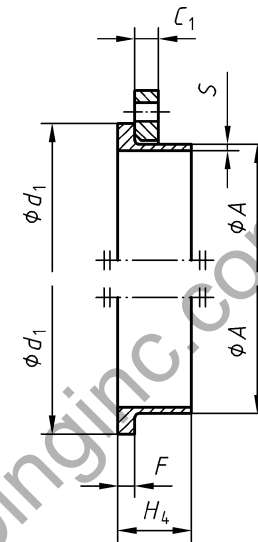
a)
This diagram illustrates the arrangement but not necessarily the correct number of bolt holes. Refer to the column "Bolting Number" in Table 15 for the actual number.



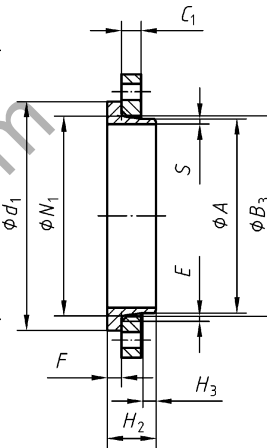
b) Type 01



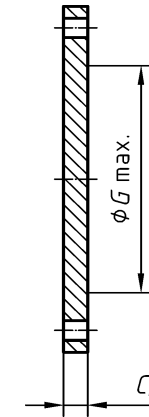
c) Type 02 and 32



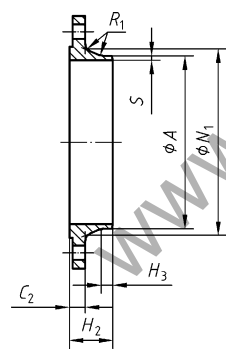
d) Type 02 and 35



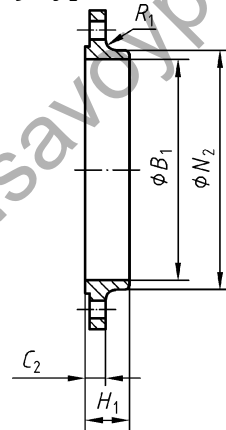
e) Type 04 and 34



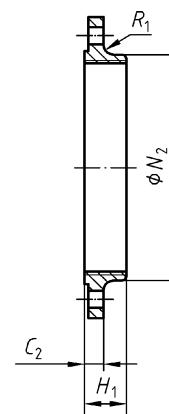
f) Type 05



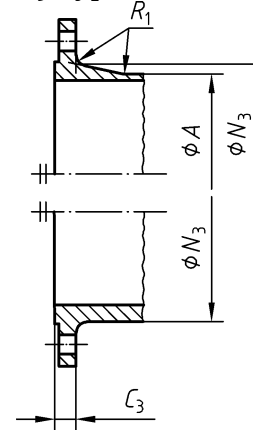
g) Type 11



h) Type 12



i) Type 13



j) Type 21

- NOTE 1 Dimensions N_1 , N_2 and N_3 are measured at the intersection of the hub draft angle and the back face of the flange.
 NOTE 2 For dimension d_1 , see Table 8.
 NOTE 3 For dimensions G_{max} refer to NOTE 1 of 5.6.1.

Figure 10 — Dimensions of PN 40 flanges

Table 15 — Dimensions of PN 40 flanges

Dimensions in millimetres

DN	Mating dimensions					Outside diameter of neck A	Bore diameters			Flange thickness				Chamfer E	Collar thickness		Centre portion G _{max}	Length				Neck diameters			Corner radii R ₁	Neck thickness (see 5.6.1) S
	Outside diameter D	Diameter of bolt circle K	Diameter of bolt hole L	Bolting			B ₁	B ₂	B ₃	C ₁	C ₂	C ₃	C ₄		F	H ₁		H ₂	H ₃	H ₄	N ₁	N ₂	N ₃			
				Number	Size																					
	Flange type																									
01, 02, 04, 05, 11, 12, 13, 21					11 21 ^a 34 ^c 35	01 12 32	02	04	01 02 04	11 12 13	21	05	02 04	32 34 ^c	35	05	12 13	11 34 ^c	11 34 ^c	35	11 34	12 13	21	11 12 13 21	34 ^c	11, 35
10	90	60	14	4	M12	17,2	18,0	21	31	14	16	16	3	12	5	—	22	35	6	35	28	30	28	4	1,8	
15	95	65	14	4	M12	21,3	22,0	25	35	14	16	16	3	12	5	—	22	38	6	38	32	35	32	4	2,0	
20	105	75	14	4	M12	26,9	27,5	31	42	16	18	18	4	14	6	—	26	40	6	40	40	45	40	4	2,3	
25	115	85	14	4	M12	33,7	34,5	38	49	16	18	18	4	14	7	—	28	40	6	40	46	52	50	4	2,6	
32	140	100	18	4	M16	42,4	43,5	47	59	18	18	18	5	14	8	—	30	42	6	42	56	60	60	6	2,6	
40	150	110	18	4	M16	48,3	49,5	53	67	18	18	18	5	14	8	—	32	45	7	45	64	70	70	6	2,6	
50	165	125	18	4	M16	60,3	61,5	65	77	20	20	20	5	16	10	—	34	48	8	48	75	84	84	6	2,9	
65	185	145	18	8	M16	76,1	77,5	81	96	22	22	22	6	16	11	55	38	52	10	52	90	104	104	6	2,9	
80	200	160	18	8	M16	88,9	90,5	94	114	24	24	24	6	18	12	70	40	58	12	58	105	118	120	8	3,2	
100	235	190	22	8	M20	114,3	116,0	120	138	26	24	24	6	20	14	90	44	65	12	65	134	145	142	8	3,6	
125	270	220	26	8	M24	139,7	141,5	145	166	28	26	26	6	22	16	115	48	68	12	68	162	170	162	8	4,0	
150	300	250	26	8	M24	168,3	170,5	174	194	30	28	28	6	24	18	140	52	75	12	75	192	200	192	10	4,5	
200	375	320	30	12	M27	219,1	221,5	226	250	36	34	36	6	28	20	190	52	88	16	88	244	260	254	10	6,3	
250	450	385	33	12	M30	273,0	276,5	281	312	42	38	38	8	30	22	235	60	105	18	105	306	312	312	12	7,1	
300	515	450	33	16	M30	323,9	327,5	333	368	52	42	42	8	34	25	285	67	115	18	115	362	380	378	12	8,0	
350	580	510	36	16	M33	355,6	359,5	365	418	58	46	46	8	36	28	330	72	125	20	125	408	424	432	12	8,8	

See Annex A

DN	Mating dimensions					Outside diameter of neck A	Bore diameters			Flange thickness				Chamfer E	Collar thickness F	Centre portion G _{max}	Length				Neck diameters			Corner radii R ₁	Neck thickness (see 5.6.1) S		
	Outside diameter D	Diameter of bolt circle K	Diameter of bolt hole L	Bolting			B ₁	B ₂	B ₃	C ₁	C ₂	C ₃	C ₄				H ₁	H ₂	H ₃	H ₄	N ₁	N ₂	N ₃				
				Number	Size																						
	Flange type																										
	01, 02, 04, 05, 11, 12, 13, 21					11 21 ^a 34 ^c 35	01 12 32	02	04	01 02 04	11 12 13	21	05	02 04	32 34 ^c	35	05	12 13	11 34 ^c	11 34 ^c	35	11 34	12 13	21	11 12 13 21	34 ^c	11, 35
400	660	585	39	16	M36	406,4	411,0	416	472	d	65	50	50	8	42	32	380	78	135	20	135	462	478	498	12	11,0	
450	685	610	39	20	M36	457,0	462,0	467	510		57	57	8	46	—	425	84	135	20	—	500	522	522	12	12,5		
500	755	670	42	20	M39	508,0	513,5	519	572		57	57	8	50	—	475	90	140	20	—	562	576	576	12	14,2		
600	890	795	48	20	M45	610,0	616,5	622	676		72	72	8	54	—	575	100	150	20	—	666	686	686	12	16,0		
700	b																										
800																											
900																											
1 000																											
1 200																											
1 400																											
1 600																											

- ^a For flanges type 21 the outside hub diameter approximately corresponds to the outside pipe diameter and the nominal value dimensions A, N3 and R1 and their tolerances are included for guidance only.
- ^b Only mating dimensions fixed, see Annex J.
- ^c Use is limited up to DN 600.
- ^d To be specified by the purchaser.